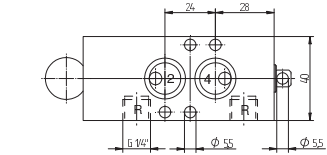
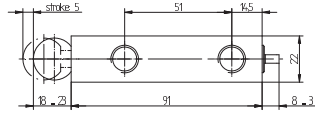
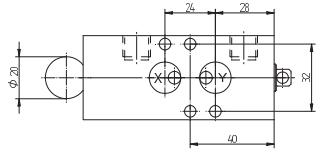
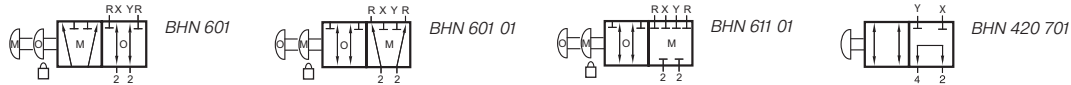
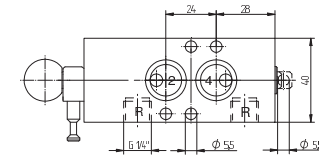
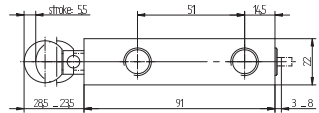
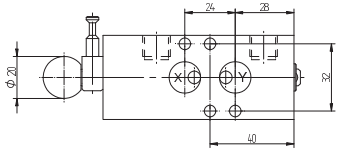


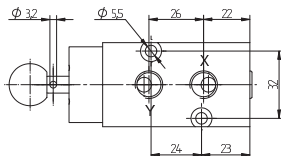
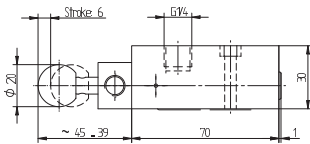
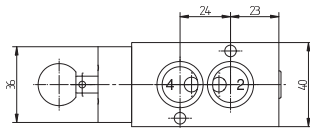
# BHN 601/BHN 601 01/BHN 611 01 BHN 420 701



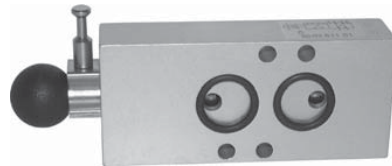
**BHN 601**



**BHN 601 01/ BHN 611 01**



**BHN 420 701**



Intermediate valve for assemblage onto the actuator with 1/4" Namurinterface. Blocks signals from pilot-valve.

BHN 601 exhausts actuator when knob is pulled. Lockable in standard operation mode (O-position).

BHN 601 01 exhaust actuator when knob is pushed. Lockable in manual mode (M-position). Protection against unintended use with pin. Typical application: to avoid injuries of maintenance personal when working on installed process equipment.

BHN 611 01 blocks actuator when knob is pushed. Lockable in manual mode (M-position). Protection against unintended use with pin. Typical application: For process valves on tanks where maintenance people have to go into the tank.

BHN 420 701 compressed air in the actuator is free to float between the two chambers.

Typical application: For process valves with manual gear-box to avoid damage caused by potentially trapped compressed air in the actuator.

If BHN 6\_\_ are required with G 1/4" ports, plate GPN 1/4 can be added. For details please refer to page 2.8.4.10.

Delivery includes 1 pin, 2 screws, 2 O-rings.

Type	Function	lockable	Air flow	Operating press.	Actuation force	Weight
BHN 601	vents actuator	O-position	900 l/min	1 - 10 bar	18 N	0,23 kg
BHN 601 01	vents actuator	M-position	900 l/min	1 - 10 bar	18 N	0,24 kg
BHN 611 01	blocks actuator	M-position	900 l/min	1 - 10 bar	18 N	0,24 kg
BHN 420 701	shortcuts actuator	-	1250 l/min	1 - 10 bar	18 N	0,22 kg