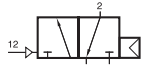
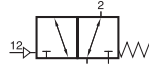


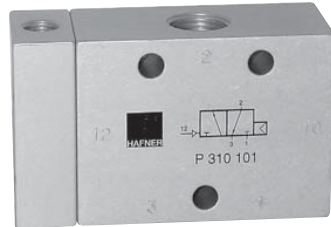
# P 310 101/P 310 121/P 310 181 P 311 101/P 311 121/P 311 181



P 310 101  
P 310 121  
P 310 181  
P 310 121 NPT



P 311 101  
P 311 121  
P 311 181  
P 311 121 NPT



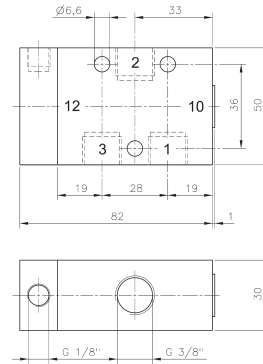
Pneumatically actuated 3/2-way spool valve.

Type P 310 \_\_\_ with air-spring-return.  
Operating pressure and actuating pressure should be at the same level.

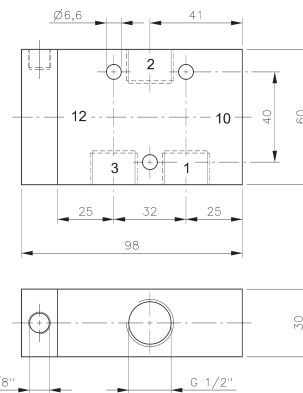
Type P 311 \_\_\_ with mechanical spring return.

If pressure is attached to port 1 the function is normally closed.  
If pressure is applied to port 3 the function is normally open.  
Pressure can only be attached to port 2 if valve has a mechanical spring (type P 311 \_\_\_).

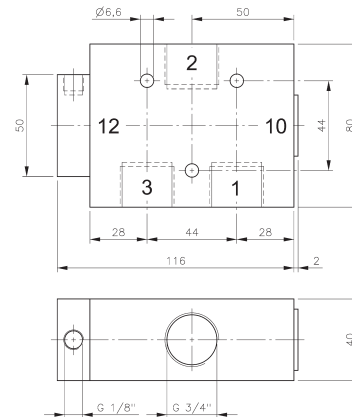
Exhaust can be throttled.



**P 310 101/P 311 101**



**P 310 121/P 311 121  
P 310 121 NPT/P 311 121 NPT**



**P 310 181/P 311 181**

| Type          | Port size | Air flow   | Operating press. | Actuating press. | Weight  |
|---------------|-----------|------------|------------------|------------------|---------|
| P 310 101     | G 3/8"    | 2250 l/min | 1 - 10 bar       | the same         | 0,32 kg |
| P 310 121     | G 1/2"    | 3000 l/min | 1 - 10 bar       | the same         | 0,45 kg |
| P 310 181     | G 3/4"    | 6000 l/min | 1 - 10 bar       | the same         | 0,85 kg |
| P 311 101     | G 3/8"    | 2250 l/min | 1 - 10 bar       | 3 - 10 bar       | 0,32 kg |
| P 311 121     | G 1/2"    | 3000 l/min | 1 - 10 bar       | 3 - 10 bar       | 0,45 kg |
| P 311 181     | G 3/4"    | 6000 l/min | 1 - 10 bar       | 3 - 10 bar       | 0,85 kg |
| P 310 121 NPT | 1/2" NPT  | 3000 l/min | 1 - 10 bar       | the same         | 0,45 kg |
| P 311 121 NPT | 1/2" NPT  | 3000 l/min | 1 - 10 bar       | 3 - 10 bar       | 0,45 kg |