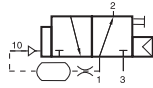


Examples for customer-specific products



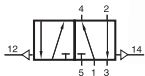
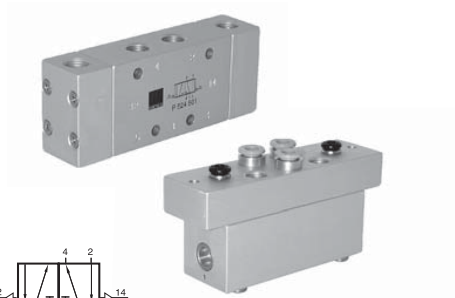
SUH 310 502

3/2-way G 1/8" impulse valve with manual override. Valve is interrupting a pneumatic signal after a defined time-period, pressing the manual override brings the signal back.



P 510 801 METS

Single-pilot 5/2-way valve with metric ports. Head is offering two pilot ports, both M10 x 1.



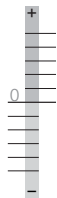
P 524 501/P 524 502/P 524 404

5/2-way Bleed valves. Negative switching double pilot valve.



PH 520 502

Double pilot G 1/8" valve with manual override. Valve offers 2 pins that stick out at the ends of the valve. Those can be used as manual override or to indicate the position. Versions to be put onto manifold plates orifice size 5 mm have also been manufactured.



P 310 701 VIT

Pneumatically actuated 3/2-way valve G 1/4" with FKM seals. Temperature range 0° C to 120° C.



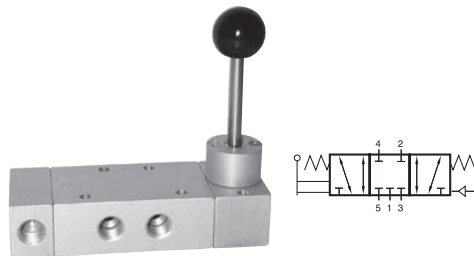
HVR 520 701

Lever actuated 5/2-way spool valve, indexed. The user can put a padlock through the 5 mm hole of the extended spool and hereby lock the valve. Temperature range: 0°C to 120°C. Seals made from FKM.



HVR 520 801 Z

G 1/4" 5/2-way lever actuated valve, indexed. Valve can not be switched without thoroughly pulling the lever. This feature can also be included into 3/2-way valves, 5/3-way valves, valves with Namur-interface or valves with spring return. Valve can be used where prevention against unintended actuation is in need.



HVP 531 501

Lever actuated 5/3-way valve, centre position closed, with spring return to middle position. When a pneumatic signal is applied to port 12, spool moves to or is held in the position where 1 is open to 2 and 4 to 5. Commercial vehicle application.