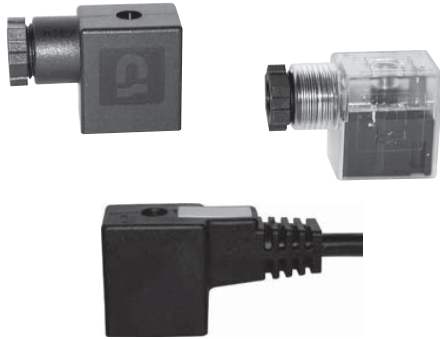


ST 16/ST 22/ ST 22 L 5000 ST 222 V __ L 1500/ST 30 Ex nA/ST 30 Ex ia



Connectors as accessories for Hafner valves.

Type ST 16 and ST 22

using the enclosed flat seal and fastening screw and nut appropriately the system reaches protection class IP 65 in accordance to IEC 60 529.

Type ST 22 L 5000/ST 222 V __ L1500

in combination with MA 22 D, using the enclosed flat seal, adding 2 O-rings at the top of the solenoid system and fastening screw and nut appropriately the system reaches protection class IP 67 in accordance to IEC 60 529.

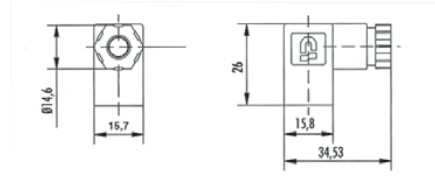
Type ST 30 Ex ia

Connector to be used in combination with MA 30 Ex ia. Connector is classified for zone 21, cat. IID. Can also be used in combination with intrinsically safe coils in zone 1 (cat. IIG). Includes flat silicon seal.

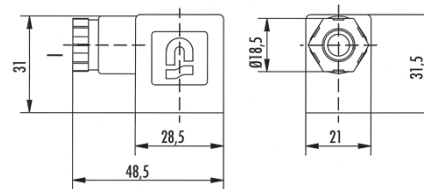
Type ST 30 Ex nA

Connector to be used in combination with MA 30 Ex na. Connector is classified for zone 2 and 22, cat. IIIG and IIID. Includes profiled NBR seal.

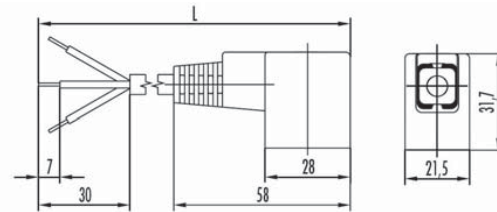
Other connectors are available on request.



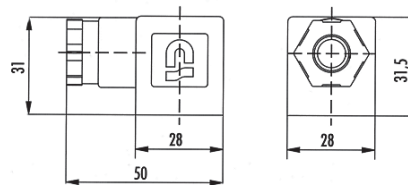
ST 16



ST 22



ST 22 L 5000/ ST 222 V __ L 1500



ST 30 Ex nA/ ST 30 Ex ia

Type	Form	LED	VAR	Operat. voltage	Max. current	Cable diameter	Cable length [mm]	Cable material
ST 16	C, ISO 15219	no	no	0 - 250 V	6 A	5 - 6,5 mm		
ST 162 V 24	C, ISO 15219	red	yes	24 V ±10 %	6 A	5 - 6,5 mm		
ST 162 V 230	C, ISO 15219	red	yes	230 V ±10 %	6 A	5 - 6,5 mm		
ST 22	Industrial	no	no	0 - 250 V	10 A	6 - 8 mm		
ST 222 V 24	Industrial	red	yes	24 V ±10 %	10 A	6 - 8 mm		
ST 222 V 230	Industrial	red	yes	230 V ±10 %	10 A	6 - 8 mm		
ST 22 L 5000	Industrial	no	no	0 - 250 V	6 A	6,5 mm	5.000	PVC
ST 222 V 24 L 1500	Industrial	red	yes	24 V ±10 %	6 A	6,5 mm	1.500	PUR
ST 222 V110 L1500	Industrial	red	yes	110 V ±10 %	6 A	6,5 mm	1.500	PVC
ST 222 V230 L1500	Industrial	red	yes	230 V ±10 %	6 A	6,5 mm	1.500	PVC
ST 30 Ex ia	A, ISO 4400	no	no	0 - 250 V	10 A	6 - 8 mm		
ST 30 Ex nA	A, ISO 4400	no	no	0 - 250 V	10 A	4 - 8 mm		