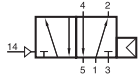
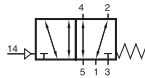


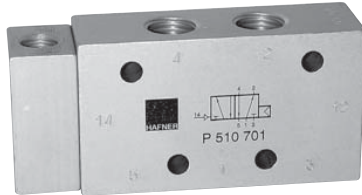
# P 510 501/P 510 701/P 510 801 P 511 501/P 511 701/P 511 801



P 510 501  
P 510 701  
P 510 801



P 511 501  
P 511 701  
P 511 801



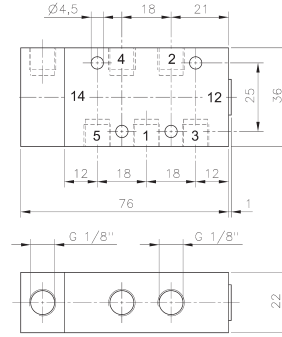
Pneumatically actuated 5/2-way spool valve.

Type P 510 \_\_\_ with air-spring-return.  
Operating pressure and actuating pressure should be at the same level.

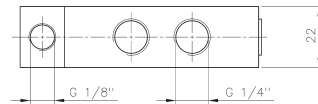
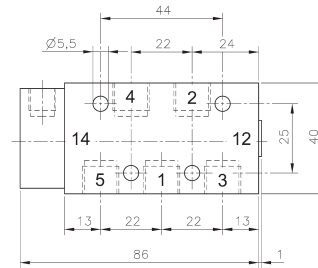
Type P 511 \_\_\_ with mechanical spring return.

Normally open from 1 to 2 and from 4 to 5.  
If pressure is applied at 14 the valve is open from 1 to 4 and 2 to 3.

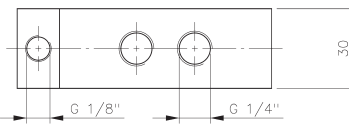
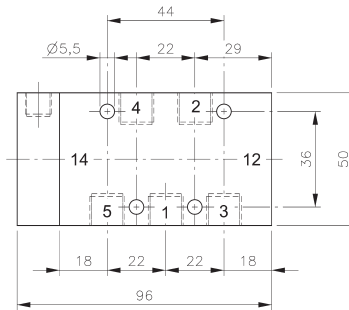
Exhaust can be throttled.



P 510 501/P 511 501



P 510 701/P 511 701



P 510 801/P 511 801

Type	Port size	Air flow	Operating press.	Actuating press.	Weight
P 510 501	G 1/8"	650 l/min	2 - 10 bar	the same	0,16 kg
P 510 701	G 1/4"	1250 l/min	2 - 10 bar	the same	0,18 kg
P 510 801	G 1/4"	1450 l/min	1,5 - 10 bar	the same	0,38 kg
P 511 501	G 1/8"	650 l/min	1 - 10 bar	3 - 10 bar	0,16 kg
P 511 701	G 1/4"	1250 l/min	1 - 10 bar	3 - 10 bar	0,18 kg
P 511 801	G 1/4"	1450 l/min	1 - 10 bar	3 - 10 bar	0,38 kg

