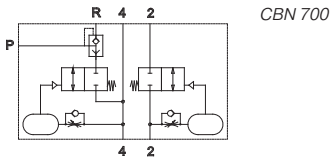


# CBN 700



Control block for double acting actuators with interface according to 1/4" Namur standard, to be used on process-valves with inflatable valve seat.

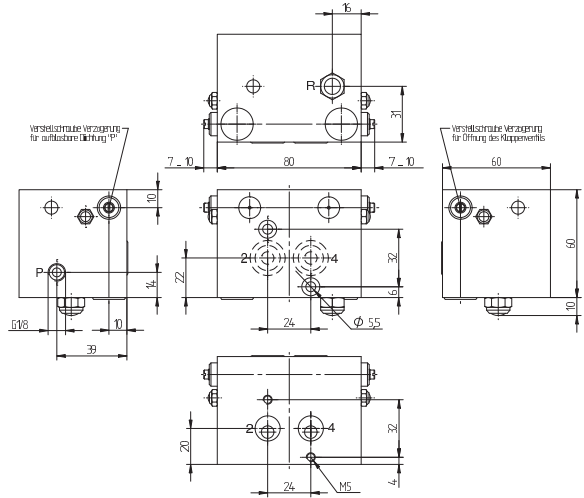
The control-block receives it's signals to open and close from a standard 5/2-way Namur valve. The block is to be put between the actuator and the Namur-valve (flange-version). The closing-signal is fed through to the actuator, the seal is inflated with time-delay.

When the process-valves is to be closed first the seal is deflated, with time-delay the actuator opens the process-valve.

Opening- and closing-time-delay can be adjusted independently but they are related to the operating pressure.

At 6 bar time-delay can be adjusted between 0 and 2 seconds.

Also available for explosion hazardous environment zone 22 (cat. III D)



**CBN 700**

Type	Namur	Port size P	Air flow act.	Air flow seal	Weight
CBN 700	1/4"	G 1/8"	900 l/min	400 l/min	0,80 kg

