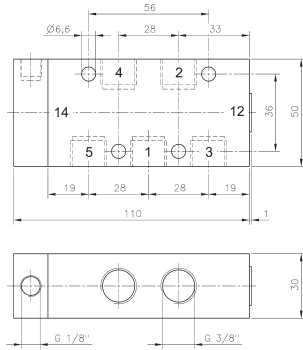
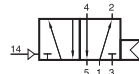


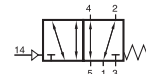
# P 510 101/P 510 121/P 510 181 P 511 101/P 511 121/P 511 181



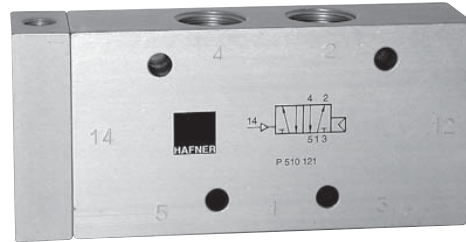
**P 510 101/P 511 101**



P 510 101  
P 510 121  
P 510 181  
P 510 121 NPT



P 511 101  
P 511 121  
P 511 181  
P 511 121 NPT



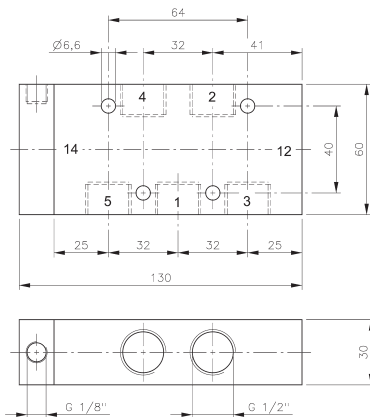
Pneumatically actuated 5/2-way spool valve.

Type P 510 \_\_\_ with air-spring-return.  
Operating pressure and actuating pressure should be at the same level.

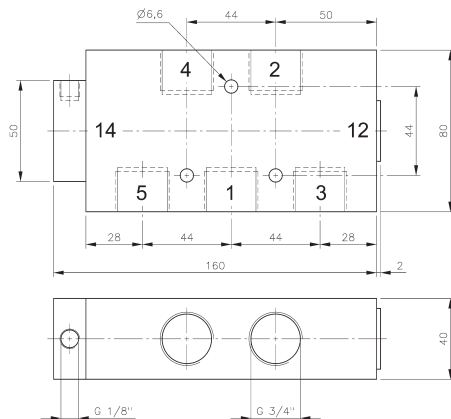
Type P 511 \_\_\_ with mechanical spring return.

Normally open from 1 to 2 and from 4 to 5.  
If pressure is applied at 14 the valve is open from 1 to 4 and 2 to 3.

Exhaust can be throttled.



**P 510 121/P 511 121  
P 510 121 NPT/P511 121 NPT**



**P 510 181/P 511 181**

Type	Port size	Air flow	Operating press.	Actuating press.	Weight
P 510 101	G 3/8"	2250 l/min	1,5 - 10 bar	the same	0,42 kg
P 510 121	G 1/2"	3000 l/min	1 - 10 bar	the same	0,59 kg
P 510 181	G 3/4"	6000 l/min	1 - 10 bar	the same	1,18 kg
P 511 101	G 3/8"	2250 l/min	1 - 10 bar	3 - 10 bar	0,42 kg
P 511 121	G 1/2"	3000 l/min	1 - 10 bar	3 - 10 bar	0,59 kg
P 511 181	G 3/4"	6000 l/min	1 - 10 bar	3 - 10 bar	1,18 kg
P 510 121 NPT	1/2" NPT	3000 l/min	1 - 10 bar	the same	0,59 kg
P 511 121 NPT	1/2" NPT	3000 l/min	1 - 10 bar	3 - 10 bar	0,59 kg